

Specifications of DocuCentre-V 7080 / 6080 / 5080

Basic Specifications/Copy Function

Item	DocuCentre-V 7080	DocuCentre-V 6080	DocuCentre-V 5080
Type	Console		
Memory capacity	4 GB (Max. 4 GB)		
Hard disk capacity ^{*1}	160 GB or larger (Used space : 128 GB)		
Scan Resolution	600 × 600 dpi		
Printing Resolution	2400 dpi or equivalent x 600 dpi		
Warm-up Time	30 seconds or less. 30 seconds or less if the main power is on (At room temperature 23°C)		
Original Size	Maximum of 297 x 432 mm (A3, 11 x 17") for both Sheet and Book		
Paper Size	Max. A3, 11 x 17", [12 x 18" (305 x 457 mm) when using Bypass Tray] Min. A5 [Postcard (100 x 148mm), Quadrate NO. 3 when using Bypass Tray]		
Image loss width	Lead Edge 4.0 mm, Trail Edge 4.0 mm, Right & Left Edges 4.0 mm		
Paper Weight ^{*2}	Tray 1, 2, 3, 4 52 to 200 gsm Bypass Tray 52 to 250 gsm		
First Copy Output Time	3.0 sec. (A4 LEF)	3.0 sec. (A4 LEF)	3.1 sec. (A4 LEF)
Continuous Copy Speed ^{*3}	B5 LEF	79 ppm	68 ppm
	A4 LEF	75 ppm	65 ppm
	A4/B5	55 ppm	47 ppm
	B4	44 ppm	39 ppm
	A3	37 ppm	33 ppm
Paper Tray Capacity ^{*4}	Standard	560 sheets x 2-tray + 1710 sheets + 2140 sheets + Bypass Tray 100 sheets	
	Optional	HCF (A4 1 Tray) : 2300 sheets HCF (A4 2 Tray) : 2300 sheets x 2-tray	
	Max.	9820 sheets [4 Tray Module + HCF (A4 2 Tray) ^{*5}]	
Output Tray Capacity ^{*4}	500 sheets (A4 LEF) (Catch Tray)		
Power Supply	AC100 V +/- 10 %, 15 A, 50 / 60 Hz common		
Maximum Power Consumption	1.5 kW or less		
	Sleep Mode : 0.9 W or less		
	Low Power Mode ^{*6} : 124 W or less		
Dimensions	W 620 x D 804 x H 1153 mm		
Weight ^{*7}	195 kg		

*1: The Storage Hard disk capacity is not totally available for customers. *2: It is encouraged to use paper recommended by Fuji Xerox. Printing may not be performed correctly depending on the use conditions. *3: The speed may be reduced due to the image quality adjustment. The performance may be reduced depending on the paper type. *4: 64 gsm paper. *5: When the HCF (A4 2 Tray) is used, the Bypass Tray capacity is 250 sheets. *6: Low Power Mode is not set at the time of shipment from the factory. *7: Excluding Toner Cartridge and output tray.

Print Function (Optional)

Item	Description
Type	Built-in type
Continuous Print Speed ^{*1}	Same as the Basic Specifications / Copy Function
Printing Resolution	1200 × 1200 dpi
Page Description Language	Standard ART EX
	Optional Adobe® PostScript® 3™
Supported Operating System ^{*2}	PLC6-Driver (Standard) Windows Server® 2003 (32bit), Windows Vista® (32bit), Windows Server® 2008 (32bit), Windows® 7 (32bit), Windows® 8 (32bit), Windows® 8.1 (32bit), Windows Server® 2003 (64bit), Windows Vista® (64bit), Windows Server® 2008 (64bit), Windows® 7 (64bit), Windows Server® 2008 R2, Windows® 8 (64bit), Windows Server® 2012 (64bit), Windows® 8.1 (64bit), Windows Server® 2012 R2 (64bit)
	Mac OS X-Driver (Standard) Mac OS X 10.5 Leopard, Mac OS X 10.6 Snow Leopard, Mac OS X 10.7 Lion, OS X 10.8 Mountain Lion, OS X 10.9 Mavericks
	Adobe® PostScript™ 3 Driver (Optional) Windows Server® 2003 (32bit), Windows Vista® (32bit), Windows Server® 2008 (32bit), Windows® 7 (32bit), Windows® 8 (32bit), Windows® 8.1 (32bit), Windows Server® 2003 (64bit), Windows Vista® (64bit), Windows Server® 2008 (64bit), Windows® 7 (64bit), Windows Server® 2008 R2, Windows® 8 (64bit), Windows Server® 2012 (64bit), Windows® 8.1 (64bit), Windows Server® 2012 R2 (64bit), Mac OS X 10.5 Leopard, Mac OS X 10.6 Snow Leopard, Mac OS X 10.7 Lion, OS X 10.8 Mountain Lion, OS X 10.9 Mavericks
Interface	Standard Ethernet 100BASE-TX / 10BASE-T, USB2.0
	Optional Ethernet 1000BASE-T

Note: WSD stands for Web Services on Devices. Note: XPS stands for XML Paper Specification. *1: The speed may be reduced due to the image quality adjustment. The speed may also be reduced depending on the document attributes. *2: Please refer our official website for the latest supported OS.

The product specifications, appearance and other details in this brochure are subject to change without notice for improvements. Please note that product colours printed in this catalog may appear different from that of the actual product for reasons attributable to paper and printing ink. All product names and company names mentioned in this brochure are trademarks or registered trademarks of their respective companies.

Reproduction Prohibitions Please note that reproduction of the following is prohibited by law: Domestic and foreign currencies, government-issued securities, and national bonds and local bond certificates. Unused postage stamps, post cards, etc. Certificate stamps stipulated by law. Reproducing works forming the subject matter of copyright (literary works, musical works, paintings, engravings, maps, cinematographic works, drawings, photographic works, etc.) is not permitted unless the reproduction is for the purpose of personal use, family use or other similar uses within a limited circle.

For more information or detailed product specification, please call or visit us at

Fuji Xerox Co., Ltd.

9-7-3 Akasaka, Minato-ku, Tokyo 107-0052
Tel. 03-6271-5111

<http://www.fujixerox.co.jp/eng>

FUJI XEROX 

Scan Function (Optional)

Item	Description
Type	Colour Scanner
Original Size	600 x 600 dpi, 400 x 400 dpi, 300 x 300 dpi, 200 x 200 dpi
Scan Speed ^{*1}	B/W : 100 ppm, Colour : 100 ppm 1 pass, 2 sided scanning : B/W : 200 ppm, Colour : 200 ppm [Fuji Xerox Standard Paper (A4 LEF), 200 dpi, to Folder.]
Interface	Standard Ethernet 100BASE-TX / 10BASE-T
	Optional Ethernet 1000BASE-T

Note: XPS stands for XML Paper Specification. *1: The scanning speed varies depending on the documents.

Fax Function (Optional)

Item	Description
Original Size	Max. : A3, Long document (Longest 600 mm)
Recording Paper Size	Max. : A3, 11 x 17" Min. : A5
Transmission Time	2 seconds and more but fewer than 3 seconds ^{*1}
Transmission Mode	ITU-T G3
Applicable Lines	Telephone subscriber line, PBX, Fax communication (PSTN), Max. 3 port ^{*2} (G3-3port)

*1: When A4 size document with approximately 700 characters is transmitted in standard image-quality (8 x 3.85 lines / mm) and in high-speed mode (28.8 kbps or faster, JBIG). Only indicates the time for transmitting the image information and does not include the communication control time. The total communication time will vary depending on the contents of the document, the type of machine receiving the fax, and line condition. *2: No. of FAX lines is up to 3 ports. Port refers to number of channels for FAX.

Notes
1) If the storage media (such as hard disk drives) of the base unit fail, loss of received data, accumulated data, registered setting data, etc. may occur. In no event shall Fuji Xerox be liable for any damages whatsoever arising from loss of data.
2) Functional spare parts will be available for at least 7 years after the product is no longer manufactured.
3) The product specifications, appearance and other details in this catalog are subject to change without notice for improvements.

DocuCentre-V 7080 / 6080 / 5080



DocuCentre-V 7080 / 6080 / 5080

High productivity and outstanding durability
for maximum value.

FUJI XEROX 

More powerful, more user friendly Handling large-volume output with ease.

A Fuji Xerox monochrome multifunction device equipped with a top-tier engine.

High-speed processing of 75 pages/minute for copying and printing. High-speed scanning of 100 ppm*² for simplex and 200 ppm*² for duplex, for both colour and monochrome originals.

Superior durability enables long hours of stable, continuous printing of up to 9820 sheets.

In addition, Finisher can be attached to provide a wide range of finishing options.

This reliable device functions as your main office machine for different types of output.



DocuCentre-V 7080 / 6080 / 5080

Copy Print B / W : 75 ppm*¹ **Scan** Colour, B / W: 100 ppm*² One-pass duplex scanning: 200 ppm*² **Fax** Super G3

*1: A4 landscape. With DocuCentre-V 7080. 65 ppm with DocuCentre-V 6080. 55 ppm with DocuCentre-V 5080.

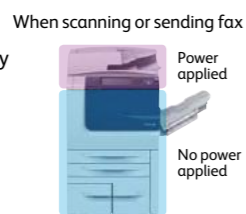
*2: For Fuji Xerox standard document (A4 landscape) saved in a Folder at 200 dpi.

*The picture shows the multifunction device with options: a large control panel, two high-capacity trays and a C3 Finisher.

Environmentally responsible

Smart energy saving

The new DocuCentre-V series uses Smart Energy Management to power only the functions requested by users. This reduces power consumption and CO₂ emissions. To minimise noise, the scanning and output devices do not generate noise when not operating.



Fast Wake-up of Control Panel

This activates the control panel in about 3 seconds after pressing Power Save button — another smart way to ensure eco-friendly operation.

Excellent TEC* with lower energy consumption

The DocuCentre-V 5080 has achieved 4.1 kWh for TEC value*, conforming to International ENERGY STAR Program standards and reducing power consumption.

* Value measured by the test defined in International ENERGY STAR Program.

TEC value DocuCentre-V 7080 5.0 kWh
DocuCentre-V 6080 4.6 kWh
DocuCentre-V 5080 4.1 kWh

Visualise eco-friendly operation

Check the degree of eco-friendliness when printing via a five-step scale. The more leaves shown, the more eco-friendly the operation.

* Requires Document Monitor to be installed on PC. (Software included on bundled DVD.)



Making multifunction devices easier to use Scan more efficiently.

Authentication management based on registered user information.

DocuCentre's local authentication settings let you manage authentication via user information registered on the multifunction device. IC Card authentication is available by adding an IC Card Reader*.

* Optional.

Conversion to Editable Word and Excel® Files

Scanned data can also be converted to files in Word or Excel® format, and hardcopy documents can be converted into editable digital documents. The DocuCentre-V series devices can also convert tables and illustrations to objects suitable for reproduction with Word and Excel®.

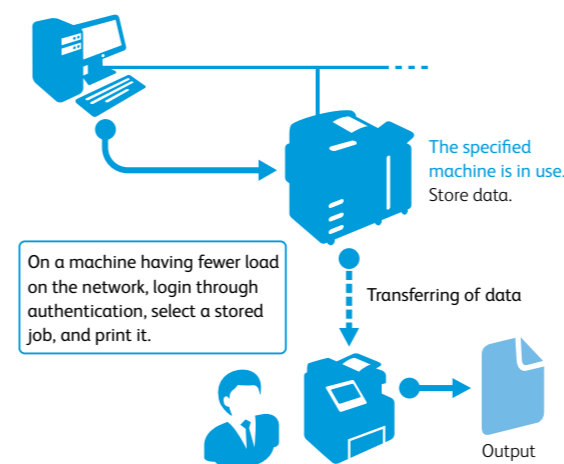
* Optional.

An auxiliary function that allows you to reuse materials such as text, tables, shapes, and photos on paper documents. However, accuracy will depend on the original document quality.

Printable from Any Device on Demand

With "Server-less On-demand Print**", even if your selected device is in use, you can print using any other device on the network. This useful function is available for up to 50 devices. "Select ID and Print**" function is also supported, which is available without authentication. When A3 and A4 MFPs are used together, an A4 MFP processes an A3 print job by reducing the image size from A3 to A4.

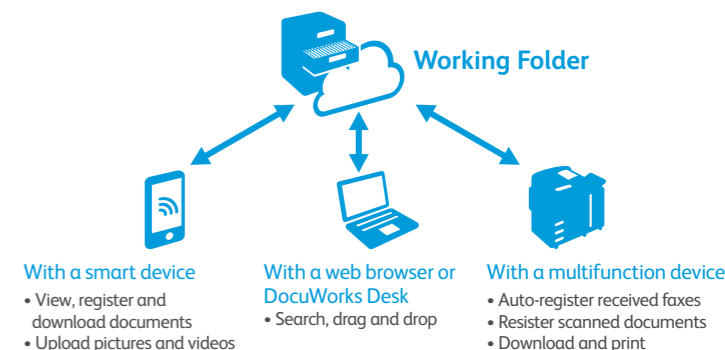
* Optional.



Mobile and Cloud applications

Working Folder

Store scanned documents directly to Working Folder, automatically upload received faxes and send upload notifications by e-mail. Stored documents can be viewed and edited on PCs or smart devices using a web browser or DocuWorks. The enhanced security and management functions allow all information to be securely shared.



*This function requires the Working Folder Service contract.

Options

Offering further finishing outputs including "Z Fold Half sheet" and "Tri-fold" with the new C3 Finisher

	C3 Finisher	C3 Finisher with Booklet Maker	C3 Finisher with Booklet Maker + Folder Unit CD1	D2 Finisher + Folder Unit D2	D2 Finisher with Booklet Maker + Folder Unit D2
Stapling thickness	50 or 65 sheets* ³	50 or 65 sheets* ³	50 or 65 sheets* ³	100 sheets* ⁴	100 sheets* ⁴
Auto staple cutter	—	—	—	○	○
Punch	2/4 hole punch* ¹ or 2/3 hole punch* ²	2/4 hole punch* ¹ or 2/3 hole punch* ²	2/4 hole punch* ¹ or 2/3 hole punch* ²	2/4 hole punch or 3 hole punch* ⁵	2/4 hole punch or 3 hole punch* ⁵
Saddle Staple	—	○	○	—	○
Single Fold	—	○	○	—	○
Tri-fold	—	—	○* ⁶	○* ⁷	○* ⁷
Z Fold Half sheet	—	—	○* ⁶	○* ⁷	○* ⁷
Cover/Slip sheet interposer	—	—	—	○	○
Tray capacity* ⁸	Output tray	500 sheets	500 sheets	500 sheets	500 sheets
	Finisher tray	3000 sheets	1500 sheets	1500 sheets	2000 sheets

*1: 2/4 Hole Punch Kit is required. *2: US 2/3 Hole Punch Kit is required. *3: C3 Finisher Staple Unit 65 sheets is required. *4: Less sheets when Z-Folded sheets are 3 Hole Punch Kit is required.

*6: Folder Unit CD1 is required. It can be attached to C3 Finisher. *7: Folder Unit D2 is required. *8: 64 gsm paper.