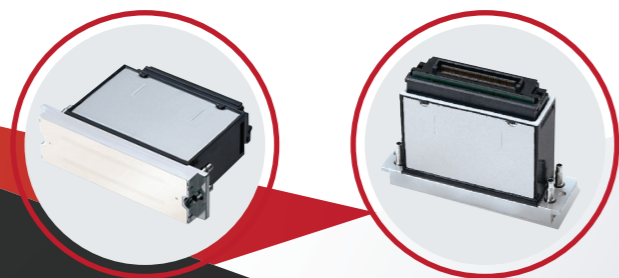


FOAMBOARD PRINTER

SCANEXT HYBRID 19086



RICOH GEN 5 / GEN 6 INKJET PRINTHEAD



PrecisionCore



High Durability



Support For Grey Scale



High Resolution

Main Technical Specifications

Model	Scanext Hybrid 19086
Printhead Type	RICOH Gen5 / Gen6
Number of Printheads	8 units
Print Width & Resolution	1800mm 720 x 1800dpi
Ink Capacity	1000ml Per Color
Ink Color	6 Color : C,M,Y,K,V,W
Ink Type	UV Ink
Printing Speed	Color White Pass: 18sqm/h , Color Pass: 54sqm/h
Printer Media Feed Method	Roll Paper : 1 Roll, Back Load, Front Output
Operating system	Windows 10
Print Interface	USB 3.0
Printing Software	Print Factory
Power supply parameters	AC 220V ± 10%, 50/60 HZ
Power (w)	2600W
Support File	BMP, TIF, JPG, PDF, EPS
Operating environment	Temperature 20 to 30 degC, Humidity 30% to 60%
Machine size	3550mm(L) x 1300mm (W) x 1450mm (H)
Machine weight	850kg
Printing Media	Foam Board, Corrugated Carton Box, Acrylic Sheet, Synthetic Paper, Tarpaulin, Super Transparent Stickers, Transparent Adhesive, CarStickers, Soft Films, Light Sheets, Canvas, PET, PVC & Other Materials

*Specification do as present one, if there is a change without notice.

Features / Advantages



Industrial All Steel Frame Structure



LED-UV Cold Light Source Curing Lamp



X-axis Deceleration Torque Device



Japanese THK Double Linear Silent Guide Rail



Fully Automatic Ink Path Independent Constant Temperature Control System, Monochrome Positive Pressure Cleaning Nozzle



Can be equipped with front rear panel supports



Electrostatic eliminator

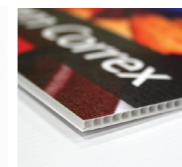


Ricoh Nozzle

High Quality Printing + Intelligent Operation For Wider Application



Corrugated Box



PP Foam Board



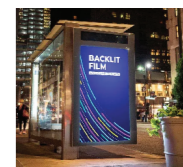
Foam Board



Acrylic Sheet



Double Sided Sticker



Light Box Backlit Film Same Color With Light Or Without Light



Light Box Backlit Fabric Same Color With Light Or Without Light